



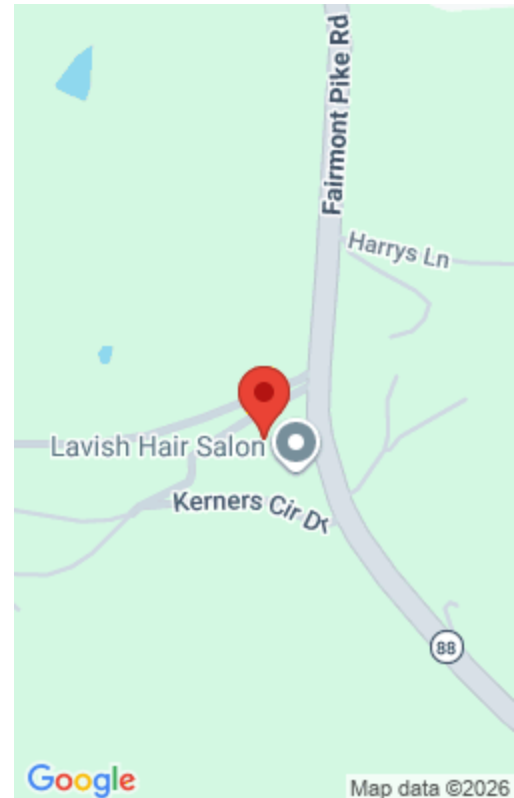
\$250,000

727 FAIRMONT PIKE ROAD WHEELING MARSHALL WV 26003

<https://www.alliedrealtygroups.com>

Check out this Spacious 3-BR, 2.5 BA Home in Desirable Mt Olivet! House sits on 0.59 Acres and includes Great Room Addition with 2nd Full Kitchen. 1st Floor Bedroom & Laundry! 2-Car Integral Garage and plenty of off-street parking. NEW ROOF MAY 2026! Beautiful Views! Move-in Ready! Call Today to schedule your showing!

- 3 beds
- 2 baths
- Residential
- Active



Basics

Date added: Added 3 weeks ago

Status: Active

Half baths: 1 half bath

Year built: 1900

MLS ID: 144737

Type: Residential

Bedrooms: 3 beds

Bathrooms: 2 baths

Rooms: 8

Building Details

Lot Size Apx: 0.59 Acres acres

Style: Multi-Level

Stories: One and One Half

Basement: Full

Amenities & Features

Cooling: Central Air

Water: County

